

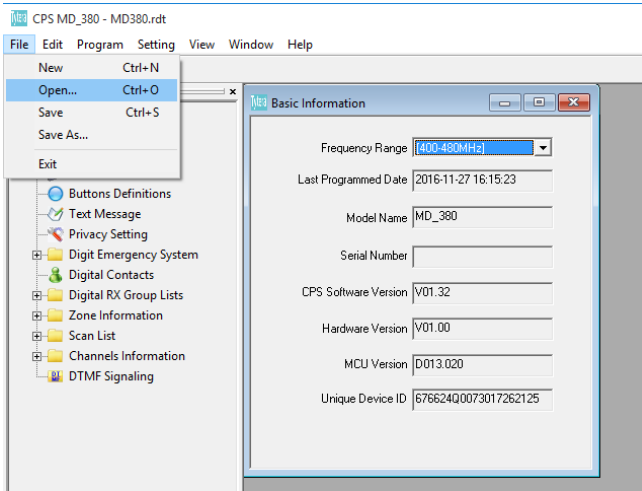
MD 380 Loading Code Plug

1



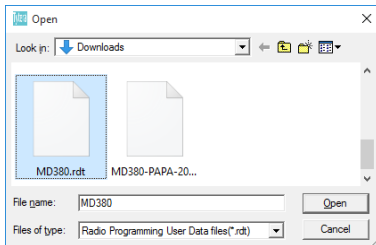
Start MD380 CPS Program by double clicking the program icon (Example of the icon shown above. The Icon might be slightly different on your computer)

2



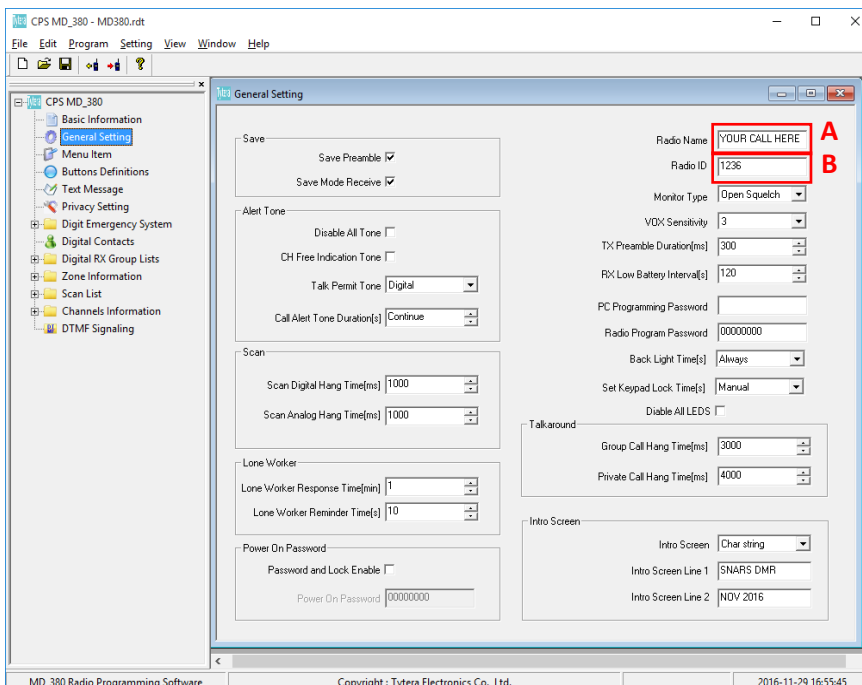
Click File, then Open on the Menu Bar (see figure above)

3



In the Open Dialog box find and select the code plug file, then click open. The code plug file will have an extension of “.rdt”.

4



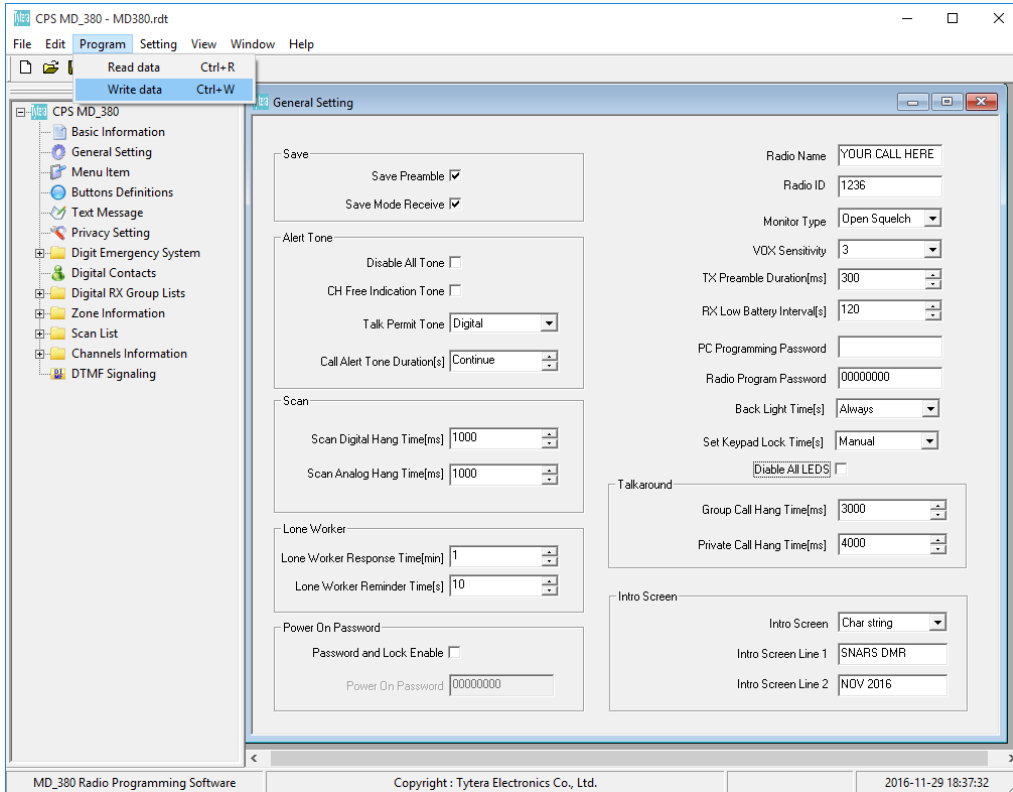
Set Your Radio ID: Click on the “General Setting” shown below.

- Type in your call sign and or name in text box **A**
- Type in your radio ID assigned to you in text box **B**

5

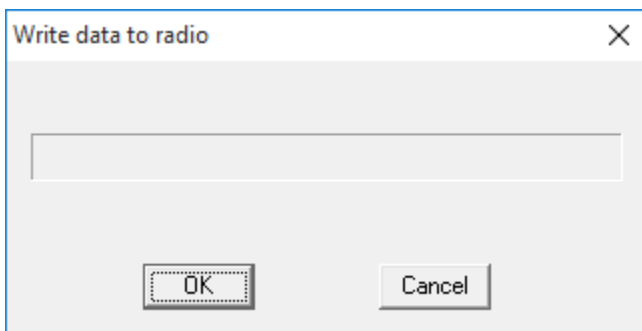
Plug your cable into the computer and radio.

6



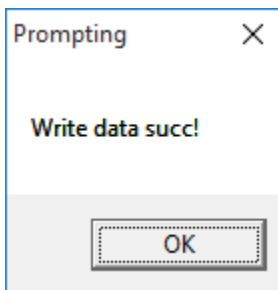
Click "Program" on the menu bar and then click "Write Date" as illustrated below.

7



A dialog box will appear. Click "OK" to start the writing to the radio.

8



You will receive the following dialog box when completed.

9

Your Radio will reboot. You can now disconnect your cables and begin using your radio.